

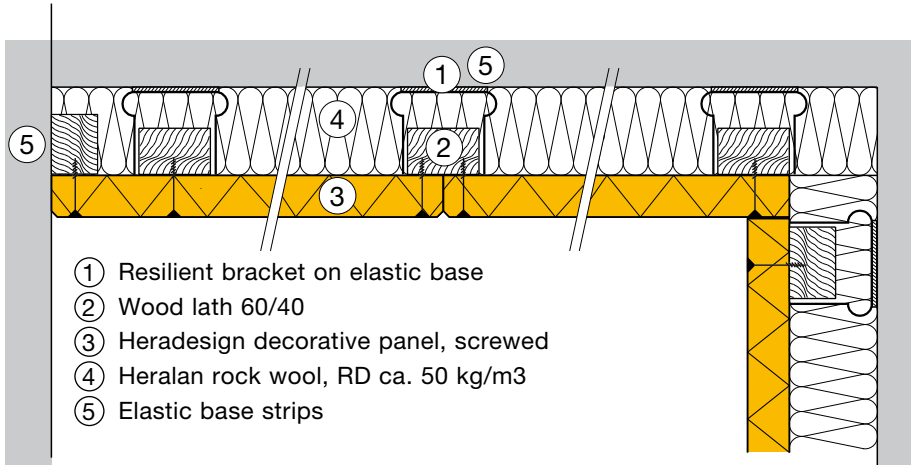
Angularly flexible facing panels for walls and ceilings

Wall Covering

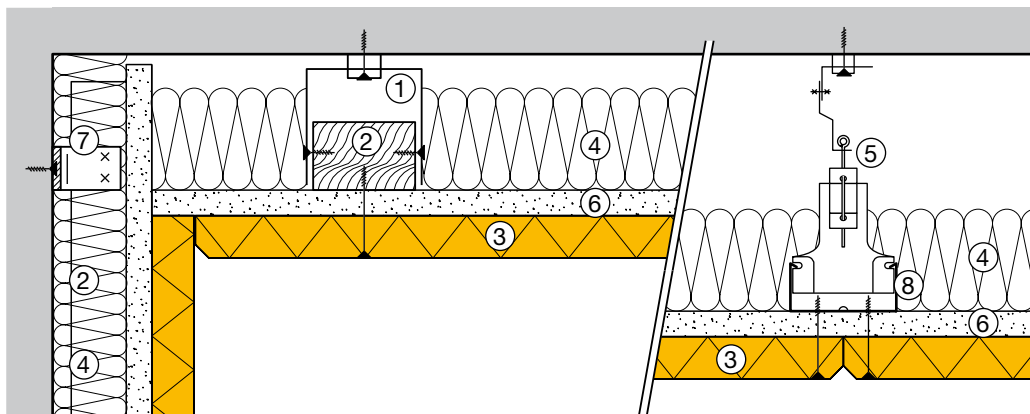
Mounting on laths and vibrating plates

Special construction to achieve shorter reverberation time with high sound insulation. This can improve the

impact sound insulation of ceilings as well as the sound insulation measurement of walls by up to 10 dB, depending on the existing construction and the assembly that has been selected.



Ceiling covering – installation on hanging lath frame / hanging CD sections



- ① U-hanger with vibration damping
- ② Wood lath 60/40
- ③ Heradesign decorative panel
- ④ Heralan rock wool, RD ca. 50 kg/m³
- ⑤ Vibration hanger with hanging wire, tension springs with CD hanger
- ⑥ Gypsum fibre board, thickness ≥ 12.5 mm
- ⑦ Resilient bracket on elastic base
- ⑧ CD section 60/27/0.7

Attention: For increased demands on sound insulation, a layer of gypsum fibre board / gypsum board / OSB panels can be placed between the substructure and the Heradesign panel. Nevertheless, the substructure must be implemented such that the Heradesign acoustic panels can be screwed into the wood laths, or alterna-

tively CD sections and the increased load can be borne safely. The spacing of the main and cross sections as well as the resilient brackets or alternatively the hangers must be matched. It is not permissible to fasten Heradesign decorative panels by gluing or by gluing with screws to gypsum/OSB boards.

Mounting Information:

- For the design requirements, see DIN 18168 T.1 „Lightweight ceiling linings and suspended ceilings”.
- Install wood laths or alternatively CD sections 60/27/07 with the required centre distance on resilient bracket with elastic base or with U-hangers with vibration damping.
- Distribute the tracks or CD sections symmetrically; make sure the end fields are the same size.
- Press the panels in and align them longitudinally in the bracing, transversely to the direction of the laths and fasten them with rust-protected screws (head diameter ≥ 9 mm) to the supporting structure. Depending on the width of the panel and the centre distance, at least 2 screws are necessary.
 - Square panels: Observe the installation direction marked on the back when installing the panels.
- Cross joints: 4 panel corners meet at one point, which means increased accuracy is required when installing. For F 30 / EI 30 ceilings, don't use any elastic damping elements – only metal resilient brackets alone. Set the screws skewed by approximately 10° .
- Screws: Wood or dry-wall screws (with special tips for CD sections) with partial thread, and countersunk heads are suitable. Head diameter: ≥ 9 mm. The necessary corrosion protection must be matched to the conditions prevailing in the room. The screw heads must be set to be flush with the panel surface and after installation, they must be covered with a paint supplied by the manufacturer by request or an equivalent. Film or mineral wool is inserted piece by piece along with the installation of the decorative panels. Film joints and connections must be masked off. A PE film with a thickness of up to 15 μm doesn't degrade the sound absorption of the underlying absorber and is recommended for mineral wool lining.
- Damaged or soiled panels or panels with colour deviations shouldn't be installed.

Panel thickness (mm)	15	25	35
Screw dimensions Heradesign screws (mm)	4.5/30	4.5/50	4.5/60
Screw dimensions according to DIN 7997, ÖNORM M5027 (mm)	4.5/35	4.5/45	4.5/60